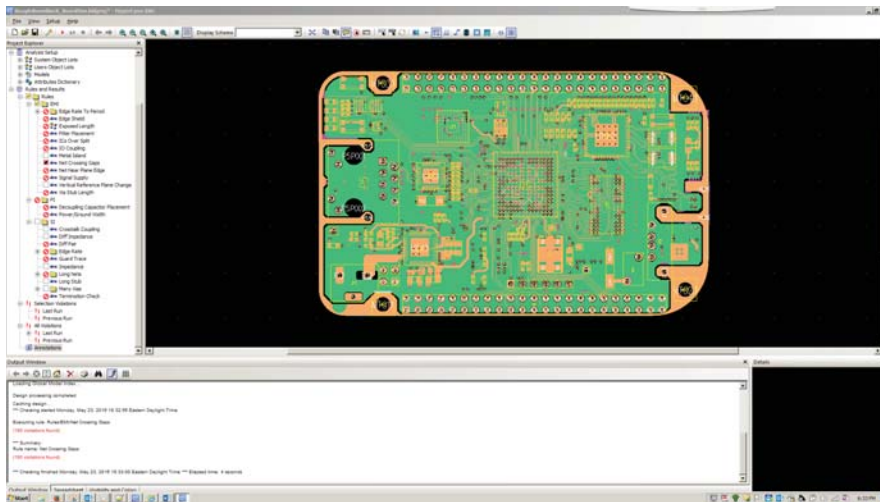




PADS HyperLynx DRC

Option for PADS Standard and PADS Standard Plus



Perform design rule checks on boards for electro-magnetic interference and signal integrity issues with PADS HyperLynx DRC.

MAJOR BENEFITS:

- Quickly identify Electromagnetic Interference (EMI) and Signal Integrity (SI) issues with eight built-in checks
- Efficient design rule checking using an advanced geometric engine
- Easy to set up and use

OVERVIEW

PADS® HyperLynx® DRC provides a customizable and powerful electrical rule checker for PCB designs. Instead of traditional PCB checks such as trace-to-trace spacing and trace-to-board edge boundary, PADS HyperLynx DRC includes a comprehensive rule set that identifies layout oversights that frequently cause EMI or SI issues.

Eight Built-In DRCs

PADS DRC includes standard checks for items related to Electromagnetic Interference (EMI) and Signal Integrity (SI). Many of the checks look for common or hard-to-find items that cannot be simulated easily, such as traces crossing splits and reference plane changes.

By identifying issues with DRC at the layout phase, errors can be caught and fixed prior to board release. Electrical rule violations identified by DRC can also guide you to areas that can be investigated with more in-depth SI/PI/3D tools.

Easy Setup and Navigation

PADS HyperLynx DRC is designed for ease of use. A built-in Setup Wizard will have you running design checks on your board in no time. Items such as electrical model assignment, connector definition, power/ground net definition, specifying discrete components, and electrical net definition are all prompted for in the Setup Wizard.

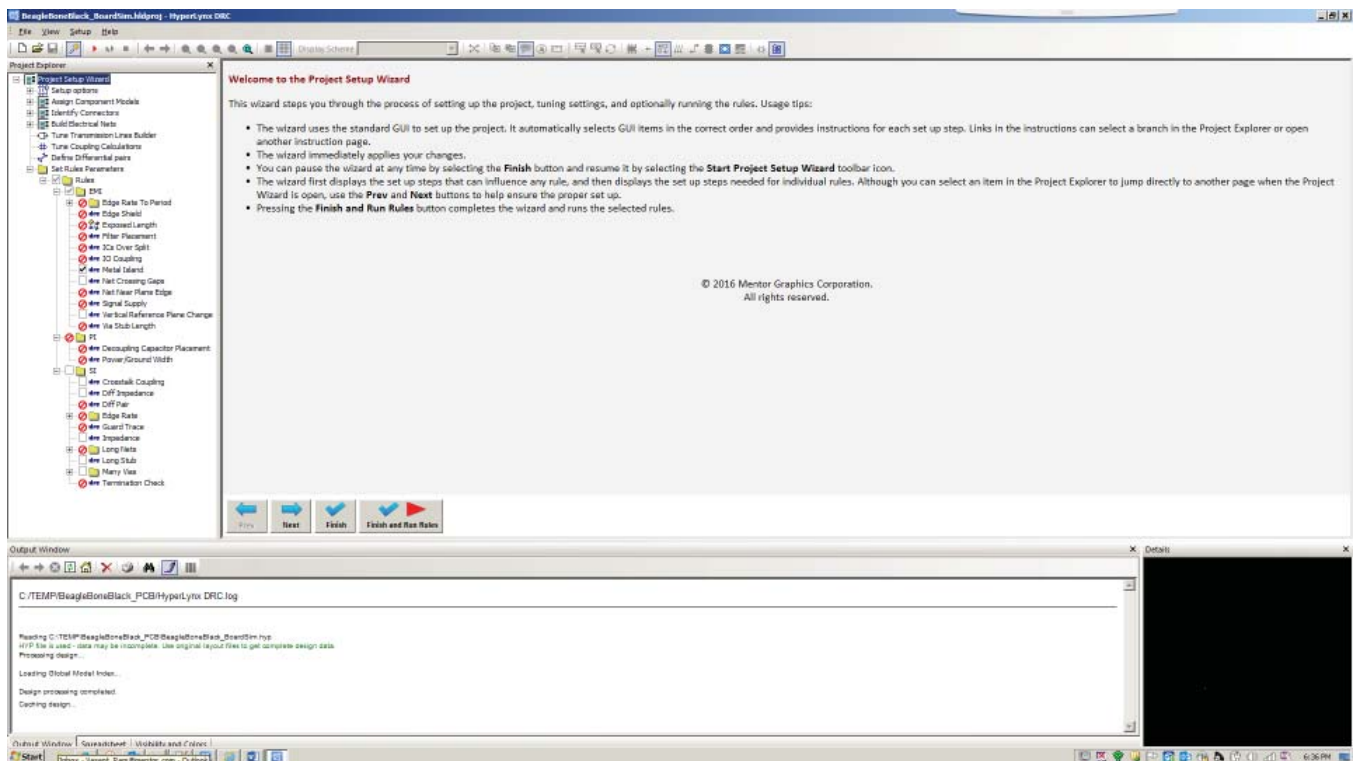
8 Built-in DRCs

EMI:

- Metal Island
- Net Crossing Gaps
- Vertical Reference Plane Change

SI:

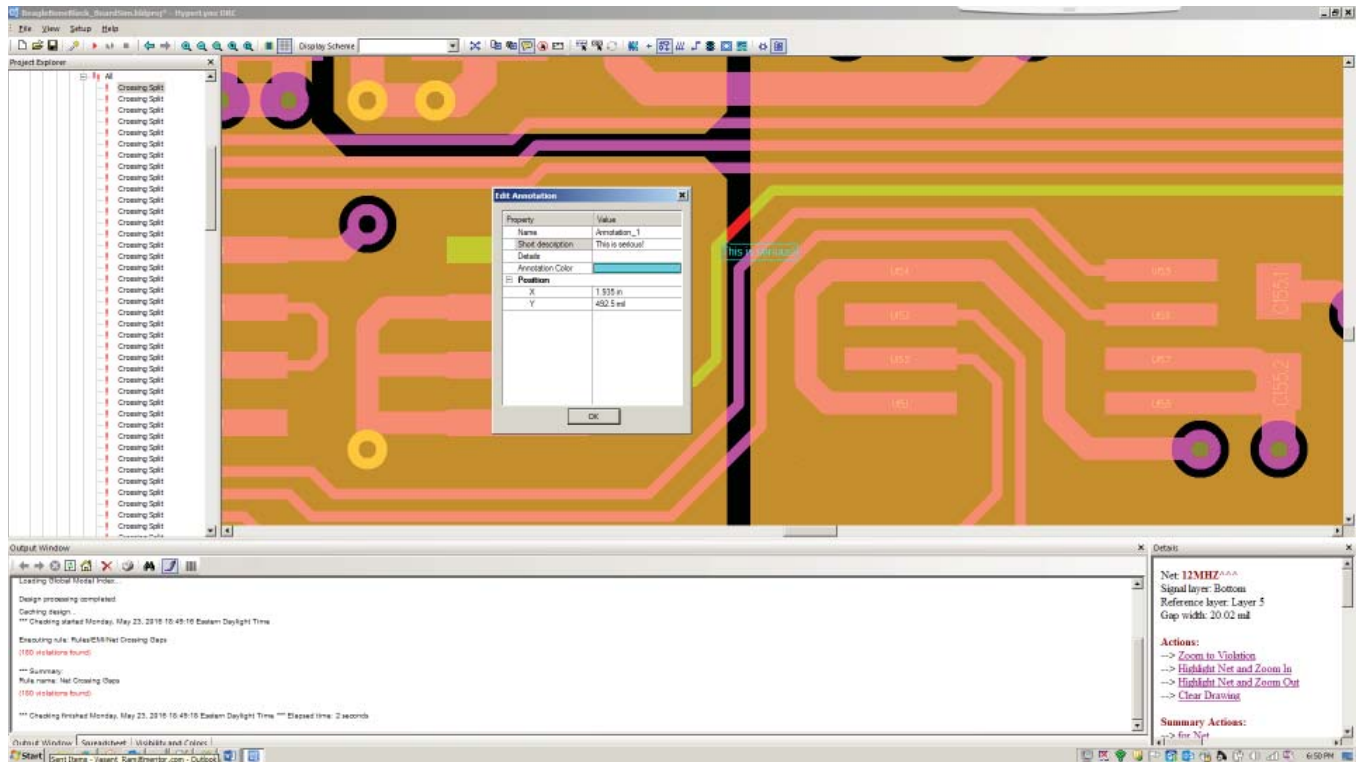
- Crosstalk Coupling
- Differential Impedance
- Impedance
- Long Stub
- Many Vias



A simple wizard-based user interface offers a check-list-based selection of DRCs to run along with the ability to filter and view violations by DRC type, electrical net, physical net, or component.

Annotations

From the project explorer view, you can mark up the violations with notes to aid in the design review and resolution process.



Annotate errors with helpful notes.

For the latest product information, call us or visit: www.pads.com

©2016 Mentor Graphics Corporation, all rights reserved. This document contains information that is proprietary to Mentor Graphics Corporation and may be duplicated in whole or in part by the original recipient for internal business purposes only, provided that this entire notice appears in all copies. In accepting this document, the recipient agrees to make every reasonable effort to prevent unauthorized use of this information. All trademarks mentioned in this document are the trademarks of their respective owners.

Corporate Headquarters

Mentor Graphics Corporation
8005 SW Boeckman Road
Wilsonville, OR 97070-7777
Phone: 503.685.7000
Fax: 503.685.1204

Sales and Product Information

Phone: 800.547.3000
sales_info@mentor.com

Silicon Valley

Mentor Graphics Corporation
46871 Bayside Parkway
Fremont, CA 94538 USA
Phone: 510.354.7400
Fax: 510.354.7467

North American Support Center

Phone: 800.547.4303

Europe

Mentor Graphics
Deutschland GmbH
Arnulfstrasse 201
80634 Munich
Germany
Phone: +49.89.57096.0
Fax: +49.89.57096.400

Pacific Rim

Mentor Graphics (Taiwan)
Room 1001, 10F
International Trade Building
No. 333, Section 1, Keelung Road
Taipei, Taiwan, ROC
Phone: 886.2.87252000
Fax: 886.2.27576027

Japan

Mentor Graphics Japan Co., Ltd.
Gotenyama Garden
7-35, Kita-Shinagawa 4-chome
Shinagawa-Ku, Tokyo 140-0001
Japan
Phone: +81.3.5488.3033
Fax: +81.3.5488.3004



MF 5-16

548906-w